



## **PortaBurr Series**



### **STANDARD FEATURES**

**PATENTED OVERHEAD DRIVE (OHD)** an Ultramatic exclusive (patent # 3991524) produces a high energy vibratory action for faster cycle times and uniform mass roll throughout the tub length. The (OHD) design reduces the horsepower for energy efficient operation while extending the bearing & lining life making it far superior than competitor models with side or under the tub driveshaft locations.

**SOUND REDUCTION PACKAGE** features a hinged, base mounted sound cover which stays on the unit and foam lined metal cabinet which keeps noise levels as low as 80 dba.

**HEAVY DUTY TUB** is of all welded steel construction reinforced by gusset plates. The tub is stress relieved then shotpeened for maximum durability insuring years of trouble free use.

**ADJUSTABLE AMPLITUDE** the factory setting rarely needs adjustment however vibrating action can be changed by adding or subtracting counterweight on the drive shaft.

**THE RUGGED POLYURETHANE TUB LINING** is abrasion resistant to withstand heavy loads providing many years of use. A removable urethane drain plug is included.

**ELECTRICAL OPERATION: 110 VOLT**  
On-off switch with 6 ft. long cord and plug, outlet for pump is provided for 110 volt operation.

**ADDITIONAL VOLTAGES:**  
230 Single phase is available at No Charge. Includes On off switch. Power cord supplied by Customer.

**SETTLING TANK** with pump and hose for self contained recirculation of solution. Also converts to "flo-thru" setup for optimum part cleanliness.

**CASTERS :** Standard On Portaburr 3

**MEDIA DISCHARGE DOOR** for change out of media.

### **TYPICAL APPLICATIONS:**

Deburring fabricated aluminum or steel parts  
Polishing boat propellers  
Deburring aluminum die cast heat sinks  
Degreasing automotive starter/alternator housings

Great for Powder and Ceramic Coaters  
Improve surface finish on titanium ball valves  
Deburring machined pinion gears and spline shafts  
Pre-anodize finish on long extruded aluminum parts  
Deburring of bronze water meter housings

OPTIONAL EQUIPMENT and SUPPLIES

▪ ST20FS Filtration System ▪ Includes Tank with Filtration Bags & Pump



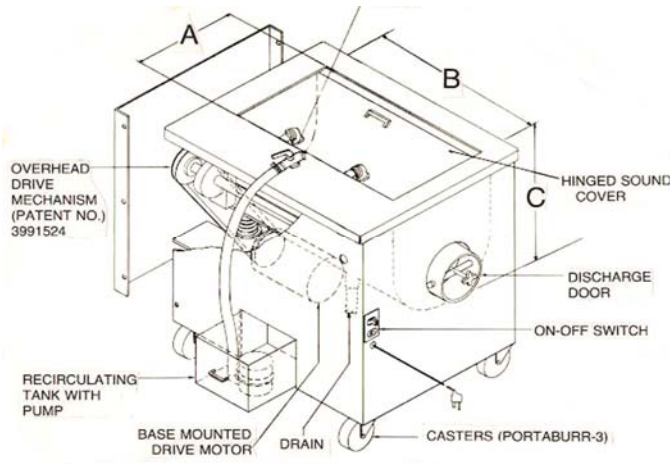
▪ 110 VOLT CONTROL PANEL WITH 0 TO 6 HOUR TIMER



▪ Media and Compound Starter Kit ▪ Includes load of media & 1 Gallon of Compound



▪ MANUAL STARTER 230/1/60 or 230/460/3/60 ▪ Power Cord Not Included



PROPS IN DRY  
POLISHING MEDIA.  
NOTE REMOVABLE TUB DIVIDERS

PORTABURR MODEL	CU FT.	“ A “ TUB WIDTH	“ B “ TUB LENGTH	“ C “ TUB DEPTH	URETHANE LINING	MOTOR HP	SHIP WEIGHT	OVERALL FLOOR SPACE
3	3	15 “	28.5 “	15 “	1/2 “	3/4	650 lbs.	3 ’ x 2.5 ‘
5	5	18 “	34.5 “	17 “	5/8 “	2	750 lbs.	3.5 ’ x 3 ‘

UltraMatic Equipment Co.  
848 S. Westgate Drive  
Addison, IL. 60101  
PHONE: (480) 951-6000 FAX: (630) 543-4569  
[www.ultramatic-equipment.com](http://www.ultramatic-equipment.com)



Request an e-quote or additional information at:  
[sales@ultramatic-equipment.com](mailto:sales@ultramatic-equipment.com)