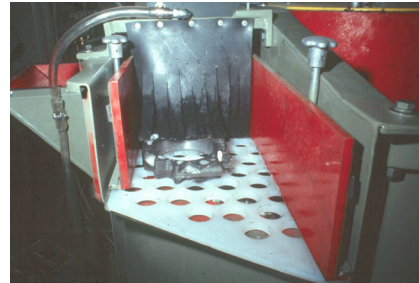


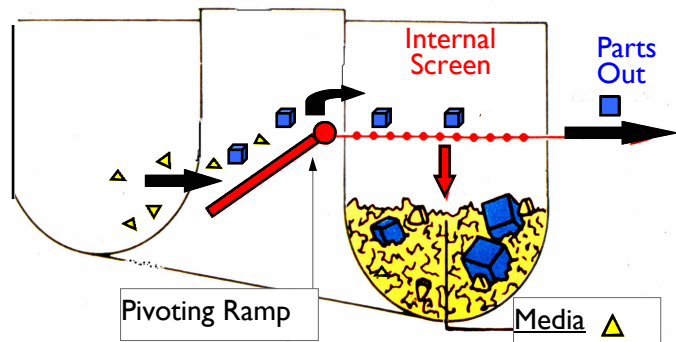


## **110 BOWL SERIES**

### **MODEL SVB 3.5 SEMI-SPIRAL BOWL**



Optional Screen Deck  
Spray Rinse



- ◆ 3 1/2 cubic ft. process capacity
- ◆ Economical single phase operation
- ◆ Quiet and easy to operate

- ◆ Internal media / parts separation
- ◆ Media stays in bowl , parts discharge out
- ◆ Replaceable polyurethane screen basket

### **TYPICAL BOWL APPLICATIONS:**

- ◆ Deburring fabricated aluminum or steel parts
- ◆ Deburring of bronze water meter housings
- ◆ Deburring aluminum die cast heat sinks

- ◆ Improve surface finish on titanium ball valves
- ◆ Deburring pinion gears and spline shafts
- ◆ Pre-anodize finish on extruded aluminum parts

## VB BATCH BOWL SERIES

Model VB 1 bowl designed for general deburring of screw machine parts , small stampings, die castings, and delicate pre chrome and gold plate finishing of fragile parts including jewelry castings , bracelets , etc.

Model VB 3.5C the larger bowl has a very large channel width to process 6 x 6 x 6 inch CNC castings and other delicate parts without part to part impingement. For larger bowls ask for VB 100 literature.



### STANDARD FEATURES

**CARTRIDGE DRIVE SYSTEM** consists of precision grease type roller bearings mounted to the vertical driveshaft. The vibrator components are protected inside the heavy steel cartridge housing which is easily accessed to keep downtime at a minimum.

**HEAVY DUTY BOWL** is of all welded steel construction reinforced by gusset plates. The tub is stress relieved then shotpeened for maximum durability insuring years of trouble free use.

**ADJUSTABLE AMPLITUDE** the factory setting rarely needs adjustment however vibrating action can be changed by adding or subtracting counterweight on the drive shaft.

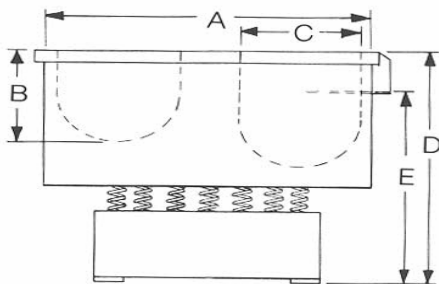
**QUIET OPERATION** is attributed to the precision drive system. Noise levels as low as 85 dBA.

**RUGGED POLYURETHANE BOWL LINING** is cast up to 3/4 " thick. The polyurethane lining is abrasion resistant to withstand heavy loads providing many years of use. A removable urethane drain plug is included and is easily cleaned out periodically. Ribbed sidewalls minimizes flat parts from sticking to sidewalls.

**SINGLE PHASE OPERATION** On-off switch with 6 ft. long cord and plug is provided for connection to 110 volt outlet. Switch includes outlet for compound pump to auto start/stop compound flow with machine.

**STEEL CONSTRUCTION BASE:** and the heavy duty coil springs support the bowl. TEFC motor is base mounted to reduce vibration. Steel footpads for floor mounting are provided.

**MEDIA DISCHARGE DOOR** for change out of media.



### OPTIONAL ACCESSORY EQUIPMENT

- AUTOMATIC GREASE LUBE SYSTEM
- AUTOMATIC PREMIXING COMPOUND SYSTEM
- ELECTRIC CONTROL PANEL WITH TIMER
- SOLUTION SETTLING TANK
- FREE STANDING SOUND COVER
- EXTERNAL SCREEN SEPARATOR FOR VB SERIES
- ADDITIONAL OPTIONS AVAILABLE

MODEL	CUBIC FT. CAPACITY	" A " DIAMETER	" B " CHANNEL DEPTH	" C " CHANNEL WIDTH	" D " OVERALL HEIGHT	" E " PART UNLOAD	MOTOR HP	SHIP WEIGHT
SVB 3.5	3.5	33 1/2 "	10 1/2 "	11 "	41 "	36 "	2	850 lbs.
VB 3.5C	3.5	33 1/2 "	11 "	11 "	38 "	N/A	2	800 lbs.
VB-1	1	22 "	6 1/4 "	8 1/4 "	32 "	N/A	3/4	225 lbs.

UltraMatic Equipment Co.  
848 S. Westgate Drive  
Addison, IL. 60101

PHONE: (480) 951-6000 FAX: (480) 951-0448

[www.ultramatic-equipment.com](http://www.ultramatic-equipment.com)



Request an e-quote or additional information at:  
[sales@ultramatic-equipment.com](mailto:sales@ultramatic-equipment.com)